

LABSERVICE (M) SDN BHD

Corporate Overview

Labservice(M) Sdn Bhd, an associate company of Consolidated Laboratory (M) Sdn Bhd, with the main focus on haemodialysis /osmosis water is a full service analytical laboratory, offering a wide range of testing services in the areas of the environment and microbiology.

Our mission is to be the leading science based provider of solution to the analysis in dialysis and hospital sector.

Since its incorporation in 1984, Labservice has grown to become one of the well established private laboratories. The company now occupies a floor space of 12,000 sq feet and employs over 50 staff

The laboratory is run by a team of qualified chemists and well experienced supporting staff, so as to ensure that the client's needs are met with complete satisfaction.

The company has a branch office in Penang and a marketing office in Melaka.

We have often carried out quality assurance programs so as to achieve an analytical precision and accuracy and at the same time to help us to meet the requirements by the department of Standard Malaysia (DSM) over a wide range of tests.

Contact any of our personnel for assistance with your next analytical requirements.

KUALA LUMPUR

Head Office

No.2-3 BEDFORD BUSINESS PARK,

JALAN 3/137B, BATU 5,

JALAN KELANG LAMA,

58000 KUALA LUMPUR, MALAYSIA

Tel : (603) 7981-0978

Fax : (603) 7981-0763

E-mail :consolab@tm.net.my

Website:consolab.com



LABSERVICE (M) SDN BHD

Joint-Venture Partner In Canada

In line with our expansion program, **Labservice(M) Sdn Bhd** has teamed up with **Cantest Ltd.**, our overseas joint venture partner based in Canada.

Cantest Ltd. is a full service analytical laboratory offering a myriad of testing including environment, industrial, clinical and veterinary fields and employs ICAP, GC/MS, LC/MS and ICP/MS.

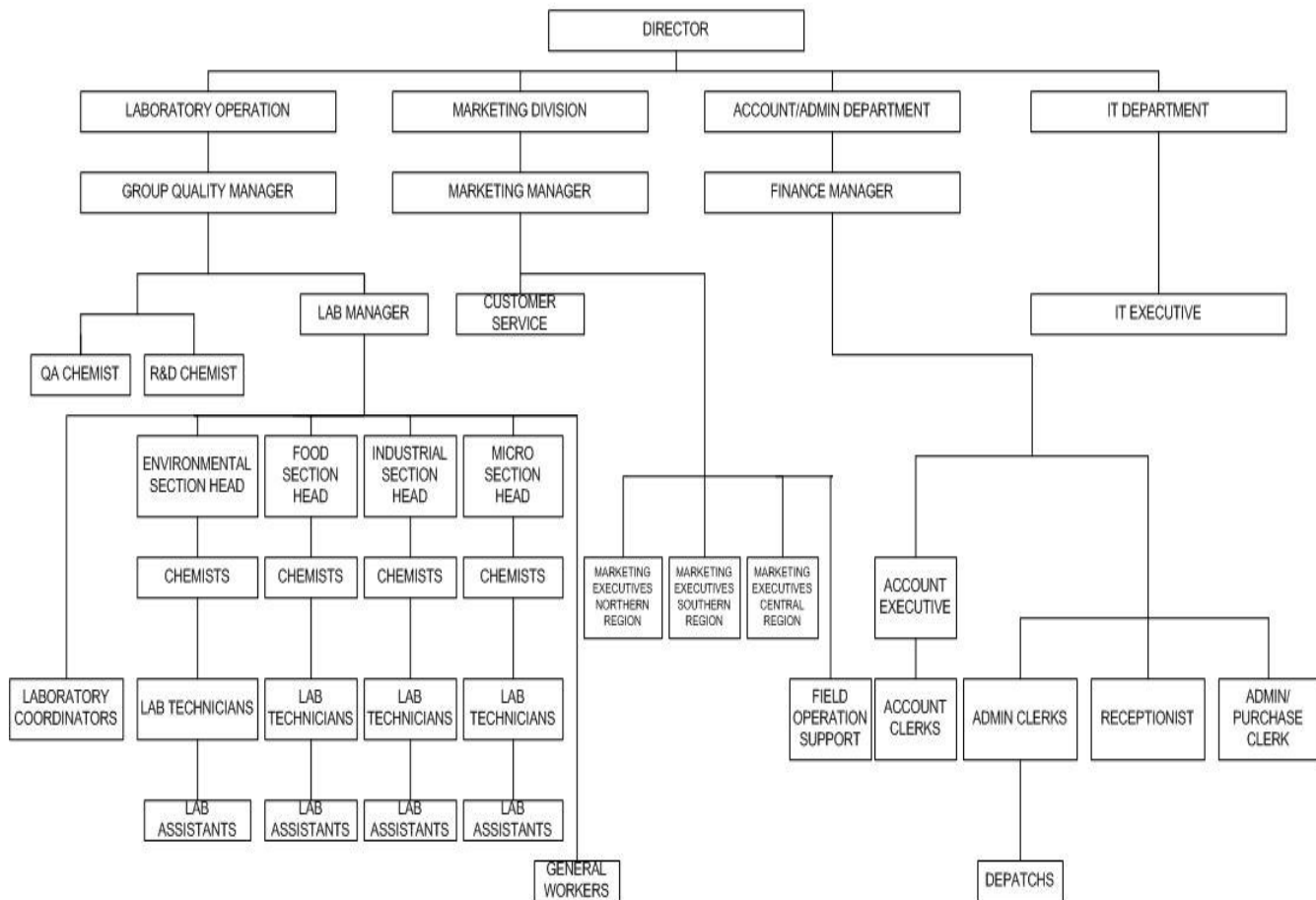
As such, Labservice / Consolidated Laboratory can provide clients with laboratory services in geographical areas in Malaysia, Asia Pacific and throughout North America.



LABSERVICE (M) SDN BHD

LABSERVICE (M) SDN BHD

ORGANIZATION CHART



LABSERVICE (M) SDN BHD

Methodology

Analytical methods employed at Labservice have been adopted from recognized sources and then validated internally. Some of these sources include:

- ~Association of Advanced Medical Instrumentation (AAMI)
- ~American Public Health Association (APHA)
- ~Association of Official Analytical Chemist (AOAC)

Technology

Labservice is equipped with highly advanced equipment that has proven to be invaluable in meeting new analytical challenges and client demands.

Labservices is equipped the up-to-date instrument. These include:

- 1.ICP-OES
- 2.GC-MS
- 3.LC-MS-MS
- 4.GC
- 5.HPLC
- 6.FTIR
- 7.AAS